

Product Description

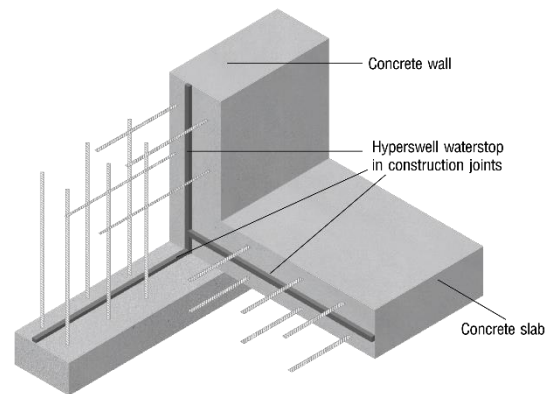


HYPERSWELL is a high performance hydrophilic swelling waterstop strip for use in non-moving concrete joint (construction joint.) It is made of flexible butyl rubber and bentonite clay that swells upon contact with water. The swelling action is the result between water and hydrophilic groups which are part of the HYPERSWELL molecular structure. Expansion of the waterstop creates a long-lasting positive seal against the face of the concrete joint and prevents the water entry into the structure through the protected joint.

Uses & Applications

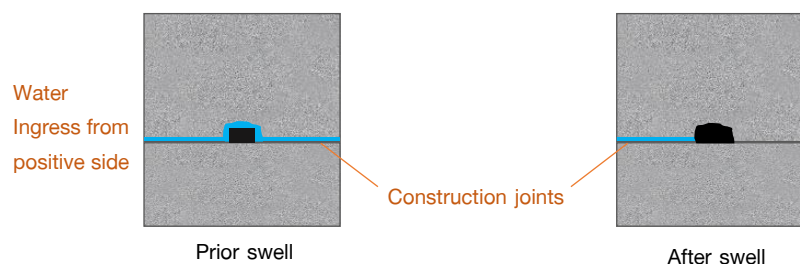
HYPERSWELL is used primarily for:

- Foundation walls, slabs.
- Slabs-on-grade,
- Precast wall panels.
- Manholes.
- Pipe penetration.
- Box culverts.
- Utility and burial vaults.
- Wet wells, pools and potable water tanks.



Key Benefits

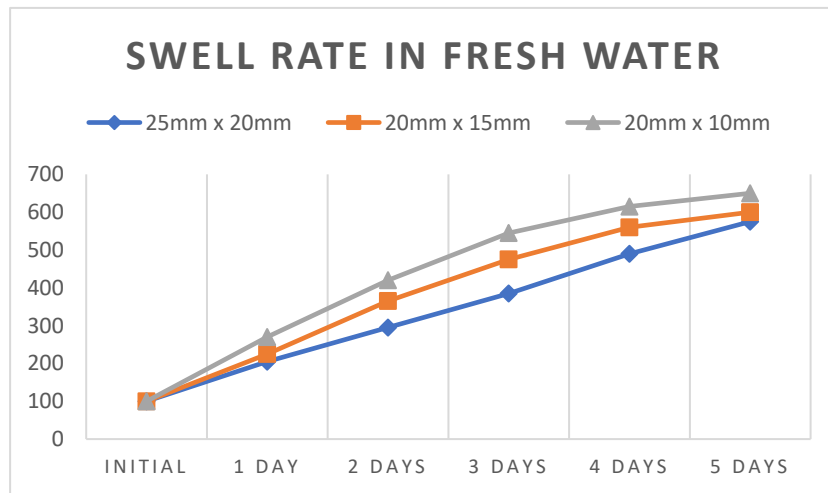
- Excellent resistance to hydrostatic pressure.
- Easy to install by bonding, nailing or casting into joint face.
- Flexible to use in horizontal and vertical joint.
- Easily butt end joining to create continuous waterstop.
- Swelling properties unaffected by long term wet/dry cycling.
- Conforms easily to irregular surface.
- Sustains effective seal in wet conditions.
- Non-toxic and require no special handling.



Technical Data

CHARACTERISTICS	RESULTS	TEST METHOD
Appearance	Black Rubber Strip	-
Specific Gravity	1.5 – 1.85	ASTM D71
Wet/Dry Cycling	Unaffected	-
Service Temperature	-40 °C to 80 °C	-
Expansion Rate	Min. 300% (by volume)	Submerged in fresh water
Hydrostatic Pressure Resistance	120 psi (84m)	AIT method
Potable Water Test	Pass	Notification of the Ministry of Industry, No. 3470
Volatile Matter	1% max	-
Adhesion to Dry Concrete	Excellent (with Waterstop Adhesive)	-
Penetration Cone	48±5	ASTM D217

WATERSTOP PRODUCT



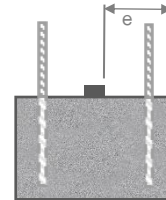
* Swell rate at 100% indicates original size. Properties are typical under laboratory conditions and do not constitute specification.

Application Instructions

- Ensure surface of construction joint is clean and free of standing water. Loose / flaking concrete or laitance should be removed by “scabbing”. Forming of a chase is not required.
- Uncoil length of HYPERSWELL, with release paper intact, and apply exposed face against concrete, pushing firmly against release paper to force HYPERSWELL into concrete undulations. When sufficient HYPERSWELL has been positioned, remove release paper.

- To join HYPERSWELL along its length or at intersections, simply “cut & butt”, to form a continuous network. Do not overlap HYPERSWELL.
- Use masonry nails for vertical installed or uneven substrate at approx. 300 mm. spacing.

Waterstop Size	Distance from concrete edge (e)
25 mm x 20 mm	Minimum 7.5 cm
20 mm x 15 mm	Minimum 7.0 cm
20 mm x 10 mm	Minimum 5.0 cm



Precaution:

Do not allow HYPERSWELL to be exposed to rain or standing water prior to pouring of concrete. In case premature swell occurred, replace previously installed waterstop with the new one.

Safety Instructions

There is no known hazard associated with HYPERSWELL during normal use. Refer to material safety datasheet.

Sizes & Packing

HYPERSWELL* are packed in carton and available in:

- 20 mm x 25 mm x 5.0 M x 7 rolls per carton
- 20 mm x 15 mm x 6.0 M x 7 rolls per carton
- 20 mm x 10 mm x 9.0 M x 7 rolls per carton

* The product dimensions may vary within defined ranges because of the product characteristics and its manufacturing process.

Storage & Shelf Life

Product must be stored in-door at room temperature, avoid of direct sunlight and humidity. Shelf life is 12 months under suitable storage condition.

Disclaimer: The information provided in this document is based on our knowledge and experience of the product. In actual application results may vary because of site conditions, application methods and other factors that beyond our control. Users are recommended to test out product performance before actual use. Any data contained in this document, including our sale person or staff consultation is in no way constitutes a warranty relative to the use of our products. Our general terms and conditions of sales shall prevail. The superseded version of this datasheet may be issued without prior notice. Customers and users are encouraged to check with our staffs for the latest version of this document.

CLEVCON (THAILAND) CO., LTD.
14/12 Moo 5, Bung Kham Proi., Lam Luk Ka, Pathum Thani, Thailand 12150
Tel: +66-2-569-1540 • Fax: +66-2-569-1541
Email: clevconthailand@gmail.com • Website: www.clevconthai.com



ISO 9001:2015 Certified